



www.isys-group.com



V24

User Guide



Thank you for selecting the V24 plotter. The employees and management at iSys will make every effort to assist you with operation of your new plotter. It is our sincere desire that your ownership experience meets your expectations.

This guide is provided to help you easily install and operate your new plotter. It contains important information on the features and functions of the V24.

NEED HELP?

If you require additional assistance or information, please contact the iSys Technical Support team at:

THE IMAGING SYSTEMS GROUP INC.

911 28th Street N.E.
Calgary, AB T2A 7X1
Canada

Phone: (403) 204-5212
Toll Free: 1-866-415-ISYS (4797)
Fax: (403) 204-1971
E-mail: support@isys-group.com

THE INFORMATION CONTAINED IN THIS DOCUMENT IS SUBJECT TO CHANGE WITHOUT NOTICE. EXCEPT AS PROVIDED BY LOCAL LAW, THE IMAGING SYSTEMS GROUP INC. (ISYS) MAKES NO WARRANTY OF ANY KIND WITH REGARD TO THIS MATERIAL, INCLUDING, BUT NOT LIMITED TO THE IMPLIED WARRANTIES OF MERCHANTABILITY AND FITNESS FOR A PARTICULAR PURPOSE. ISYS SHALL NOT BE LIABLE FOR ERRORS CONTAINED HEREIN OR FOR INCIDENTAL OR CONSEQUENTIAL DAMAGES IN CONNECTION WITH THE FURNISHING, PERFORMANCE OR USE OF THIS MATERIAL.

Trademarks: Centronics is a trademark of Centronics Data Corp. Veratec is a Trademark of Xerox Corp.

WARNING: A WARNING indicates the potential for personal injury.

CAUTION: A CAUTION indicates the potential for damage to the V24.

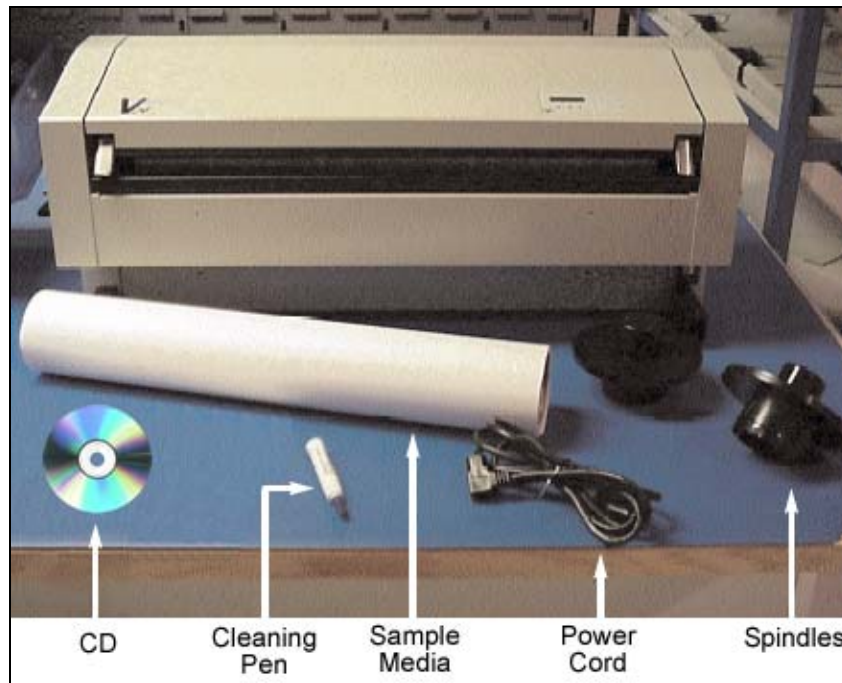
NOTE: A NOTE indicates special attention is required.

Contents

Unpacking	4
Location of the V24 Plotter.....	5
Overview	5
Cable Connections.....	6
Versatec™ Interface Setup.....	8
Driver Installation	9
Quickdraw Media Installation	18
Quickdraw Media for the V24.....	20
Starting the V24 Plotter	21
Warranty, Maintenance and Service	27

Unpacking

WARNING: The V24 plotter weighs approximately 60 lbs. Use appropriate care when unpacking, lifting or moving the unit.



Shipments are checked for completeness. Please confirm receipt of the following items:

- Power Cord – 110/120 volt AC
- Warranty Statement
- Media Spindles
- Sample Media Roll
- Print Head Cleaning Pen
- CD (Includes Product Manual and Drivers)

NOTE: Confirm the receipt of options specified in your order.

NOTE: Inspect the shipment for any concealed damage that may have occurred during shipment. Report any damage to the carrier of the shipment and the iSys Technical Support team immediately. While iSys assumes no liability for “in transit” damage, we will assist in damage claims with carriers.

NOTE: Save the original packaging materials. Any future shipment should be made in the original packaging. iSys is not responsible for damage caused in any future shipping due to improper packaging.

CAUTION: During shipment, storage or long idle periods, place a length of thermal media between the print head and platen roller to prevent possible damage to the print head.

CAUTION: If plotter is idle for more than 8 hours, release head pressure to prevent platen roller flat spotting.

CAUTION: The electronic components of the V24 plotter can be damaged by electrostatic discharge (ESD). To avoid ESD, maintain contact with a ground source. A grounded wrist strap or similar should be used.

Location of the V24 Plotter

Properly locating the V24 will help to enhance its performance and extend its useful life. The plotter has a wide operating range and functions well under various conditions. For best performance, we recommend the following conditions:

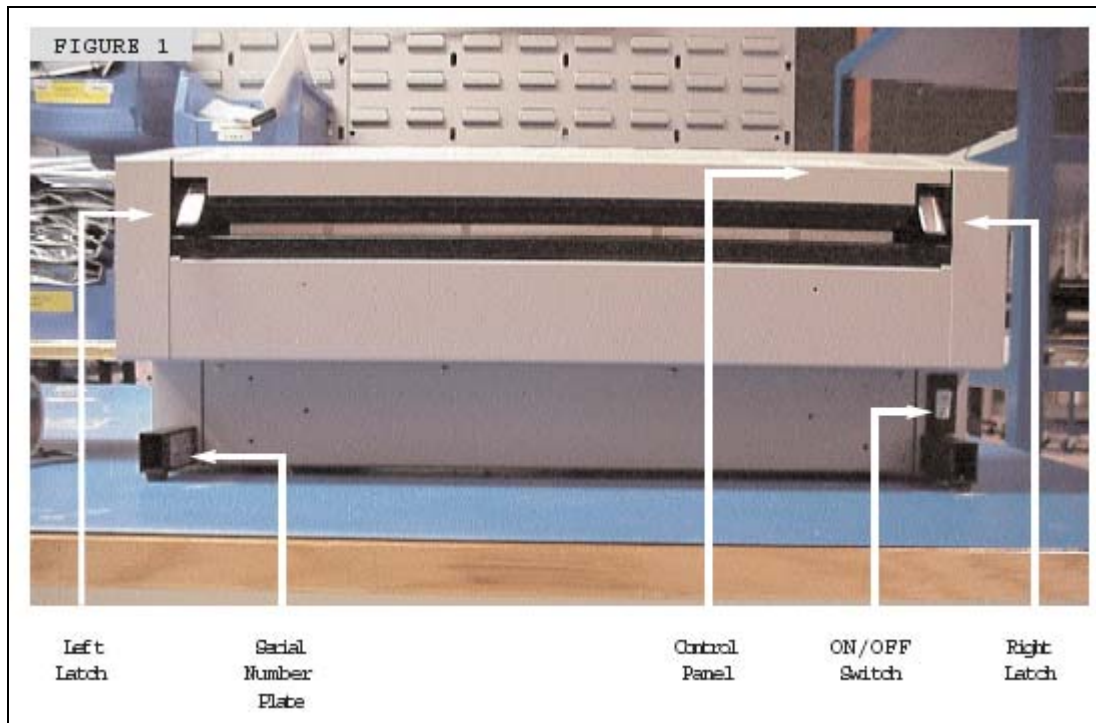
- Place in a well ventilated, stable environment free from abrupt temperature or humidity changes.
 - Temperature – 10 to 40 deg. Celsius (50 to 104 deg. Full)
 - Relative Humidity 40% and 70% (non-condensing)
- Place on a firm, flat surface.
- Avoid sources of direct heat and sunlight.
- Allow a minimum of 20 cm (9 in.) side clearance for proper airflow.

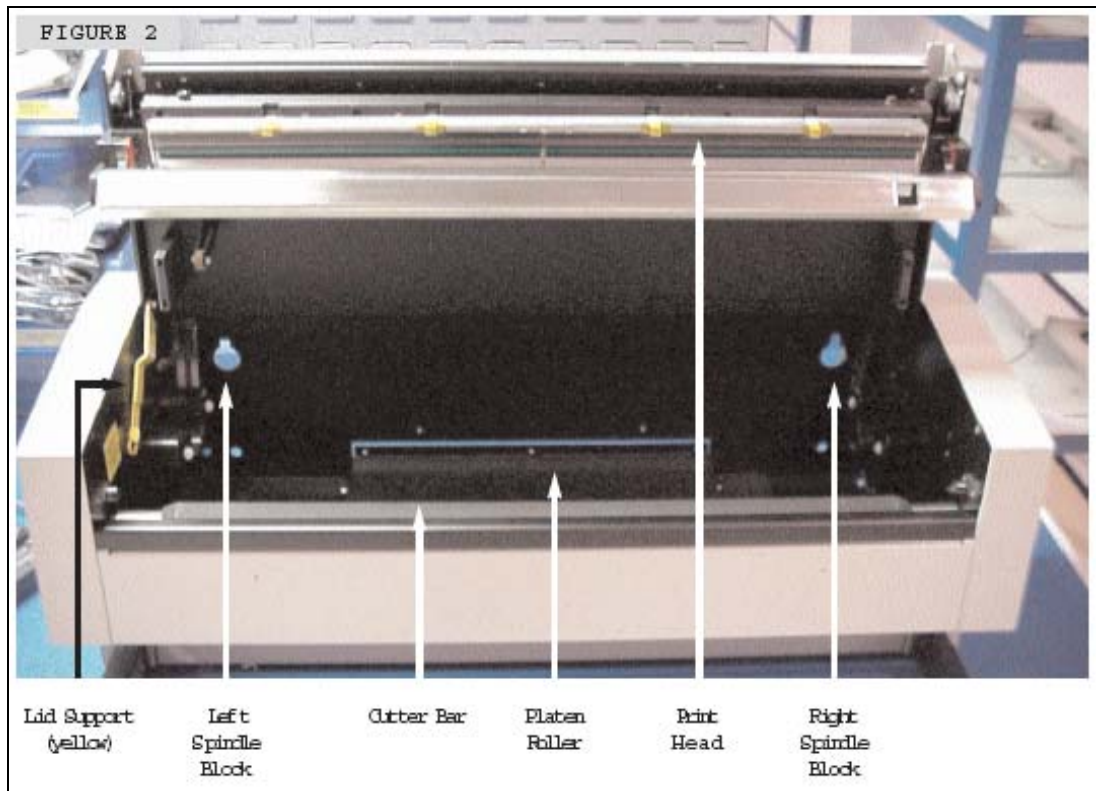
WARNING: The V24 plotter weighs approximately 28 kg. (60 lb.). Use appropriate care when lifting or moving the unit.

CAUTION: Do not touch the thermal print head. Natural body oils can damage it. Scratches in the print head will affect image quality. Print head damage caused by users is not covered by warranty.

CAUTION: Do not block the air vents. Proper airflow helps maintain operating temperature.

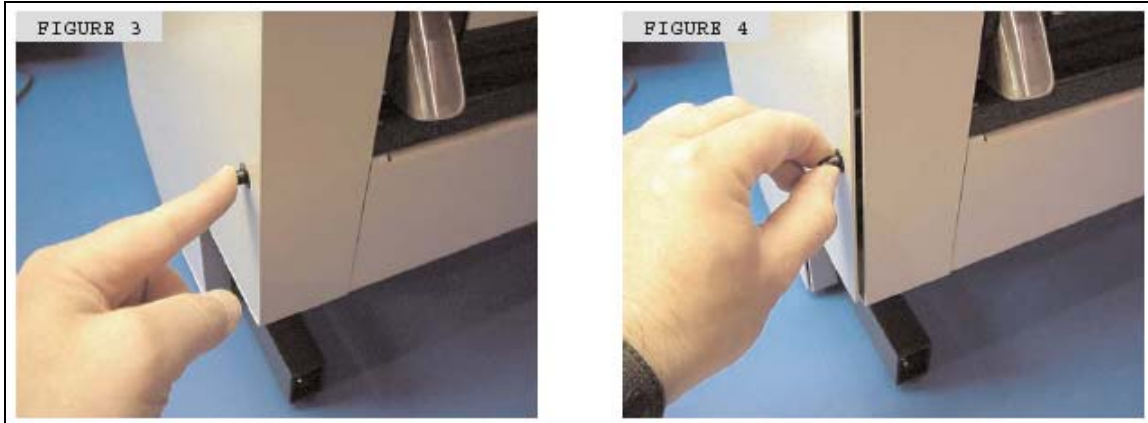
Overview



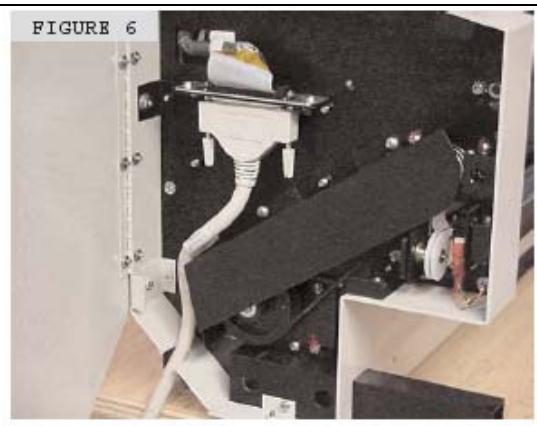
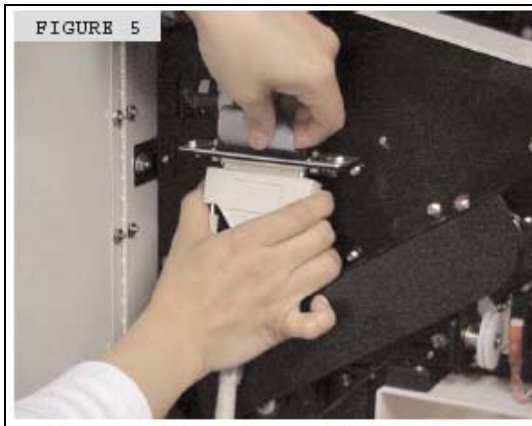


Cable Connections

INSTALLING THE DATA CABLE.



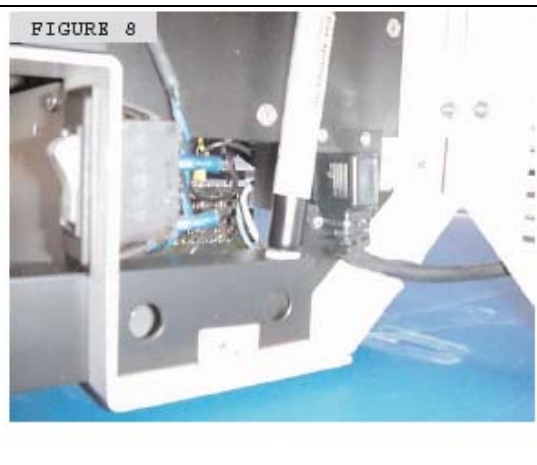
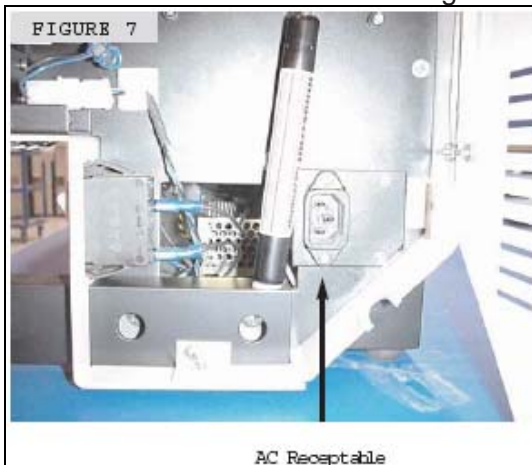
1. Push the black button on the left side panel (figure 3).
2. With the black button sticking out, pull on the button to open the side panel exposing the data bulkhead (figure 4).



3. Install data cable into the bulkhead and secure thumb-screws (figure 5).
4. Slide cable into the exit slot on the bottom back corner and close side panel (figure 6).
5. To lock side panel, press the black button.

INSTALLING THE AC POWER CORD

WARNING: Electric shock warning.



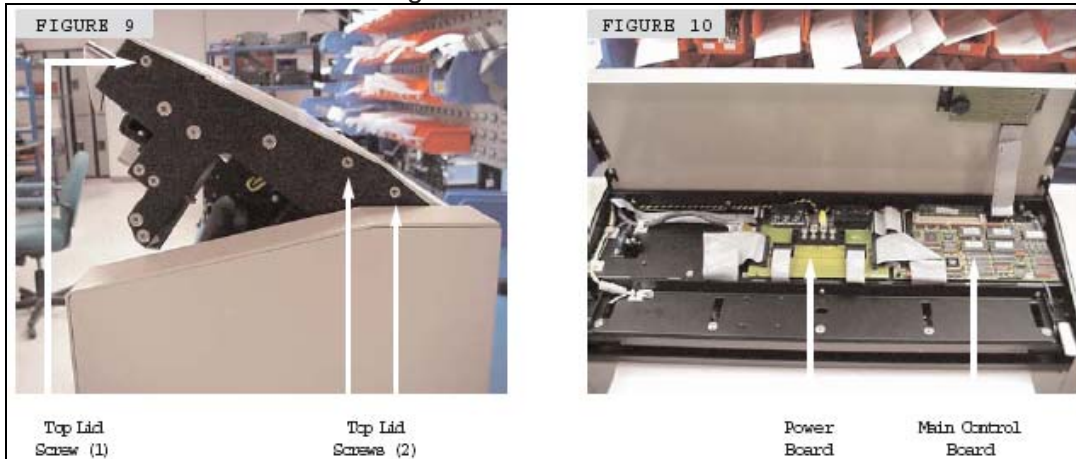
1. The AC Power cord is located under the right side panel. It opens in a similar fashion to the left side panel.
2. Push the black button on the right side panel.
3. With the black button sticking out, pull on the button to open the side panel exposing the AC receptacle.
4. Plug the supplied AC power cord into the receptacle (figure 7).
5. Slide the cord into the slot on the bottom back corner and close the side panel (figure 8).
6. To lock the side panel, press the black button.

NOTE: Avoid sharing a power outlet with noise-generating equipment.

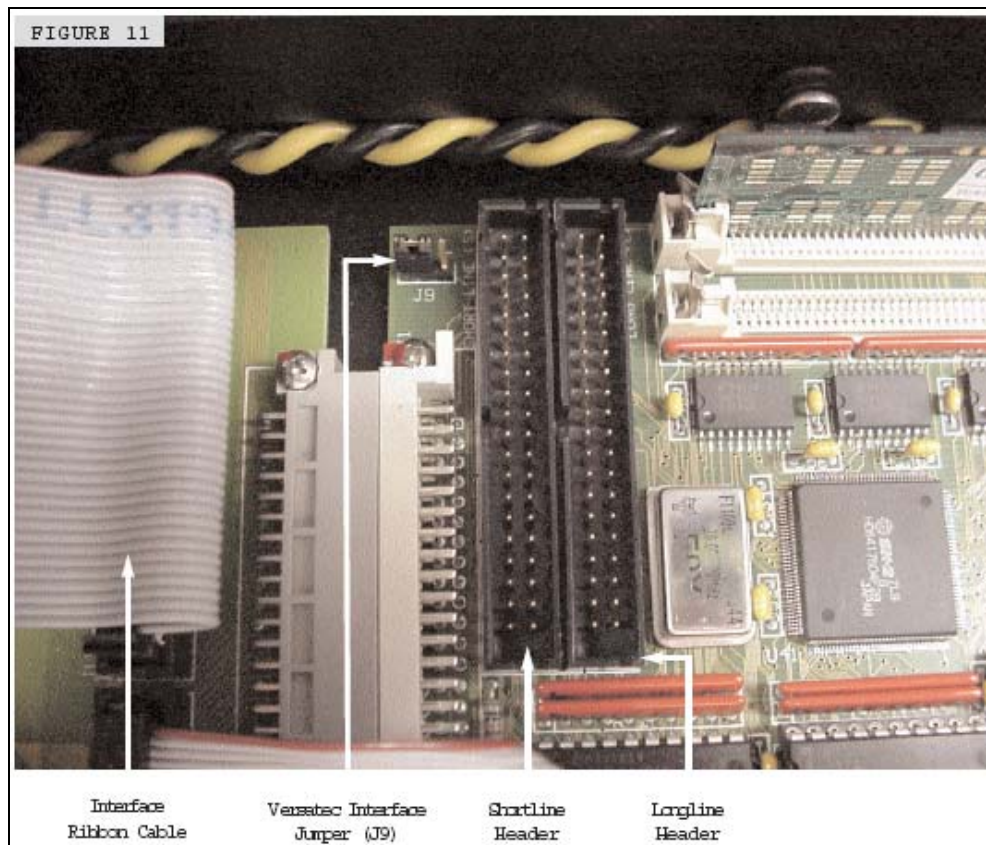
Versatec™ Interface Setup

CAUTION: The electronic components of the V24 plotter can be damaged by electrostatic discharge (ESD). To avoid ESD, maintain contact with a ground source. A grounded wrist strap or similar should be used.

WARNING: Electric shock warning.



1. Pull on lid latches and lift lid slightly (see figure 12).
2. Remove 3 screws on each of the left and right side arms of the lid (see figure 9).
3. Lift up on the lid cover to expose the main control board electronics (see figure 10.)



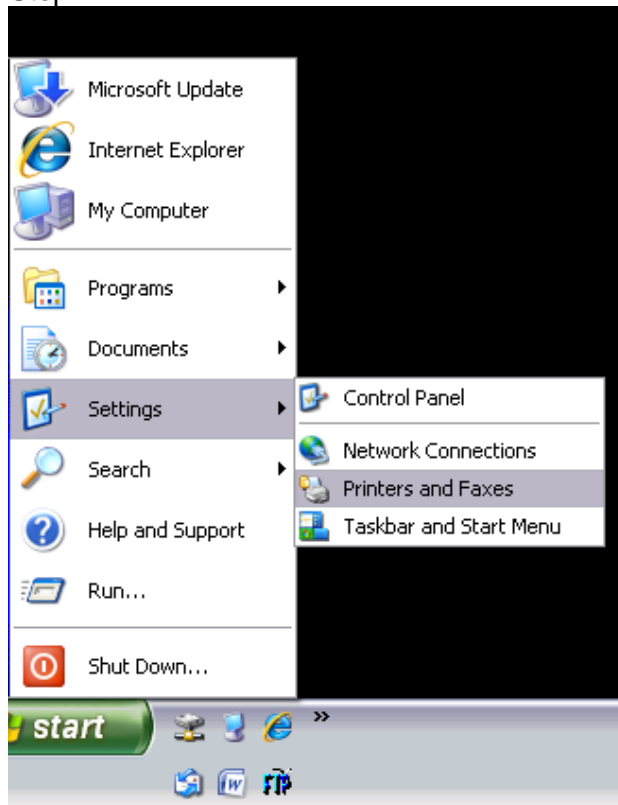
1. Unplug interface ribbon cable.
2. Move interface jumper J9 to select "S"(shortline) or "L"(longline).
3. Plug interface ribbon cable into the header to match the interface jumper J9 setting.

NOTE: Figure above shows the interface jumper J9, set to shortline.

Driver Installation

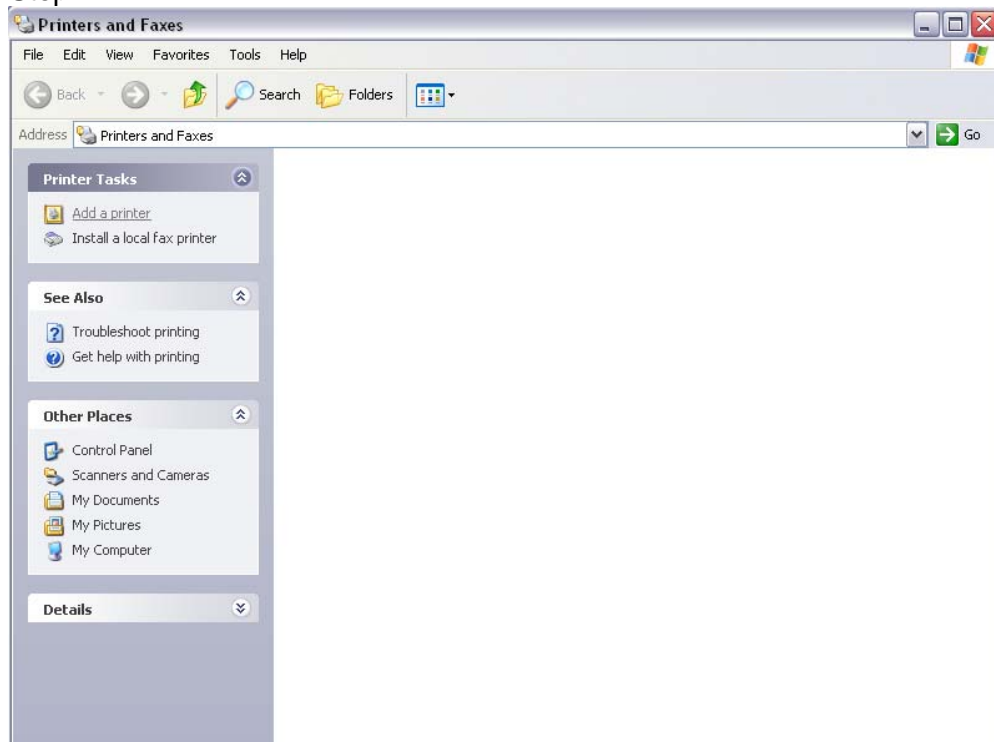
Driver is compatible with Microsoft XP, Vista, and Windows 7: 32/64bit

Step 1



Go to Windows **Start** ► **Settings** ► **Printers and Faxes**

Step 2



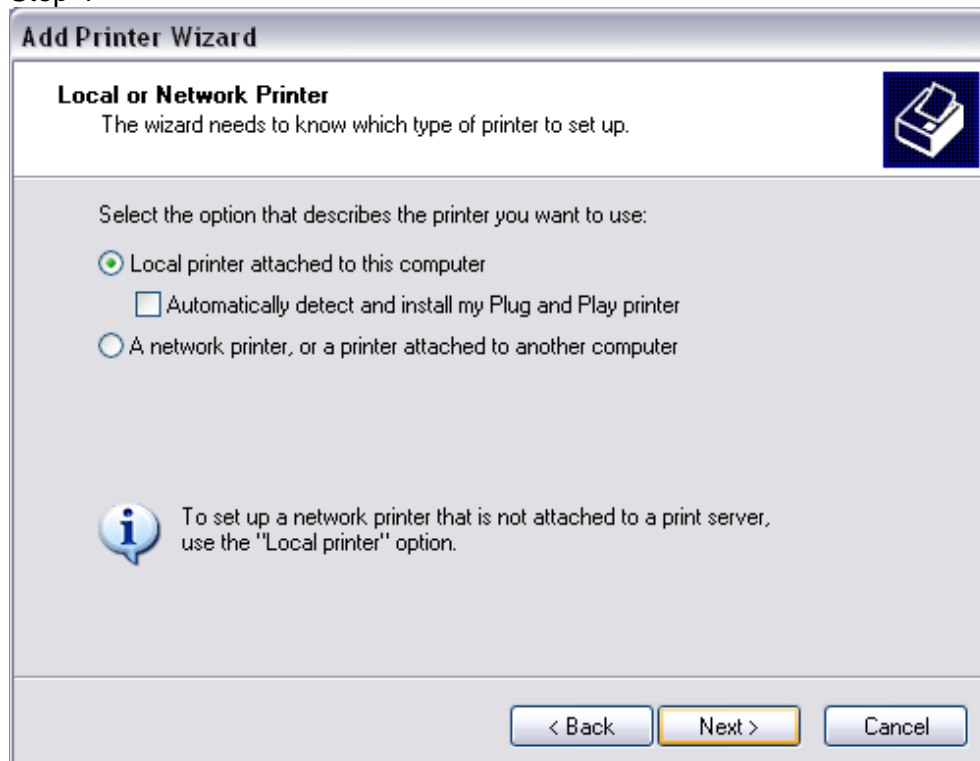
Select **Add a Printer** on the Left hand side of the window ► Press **Next**

Step 3



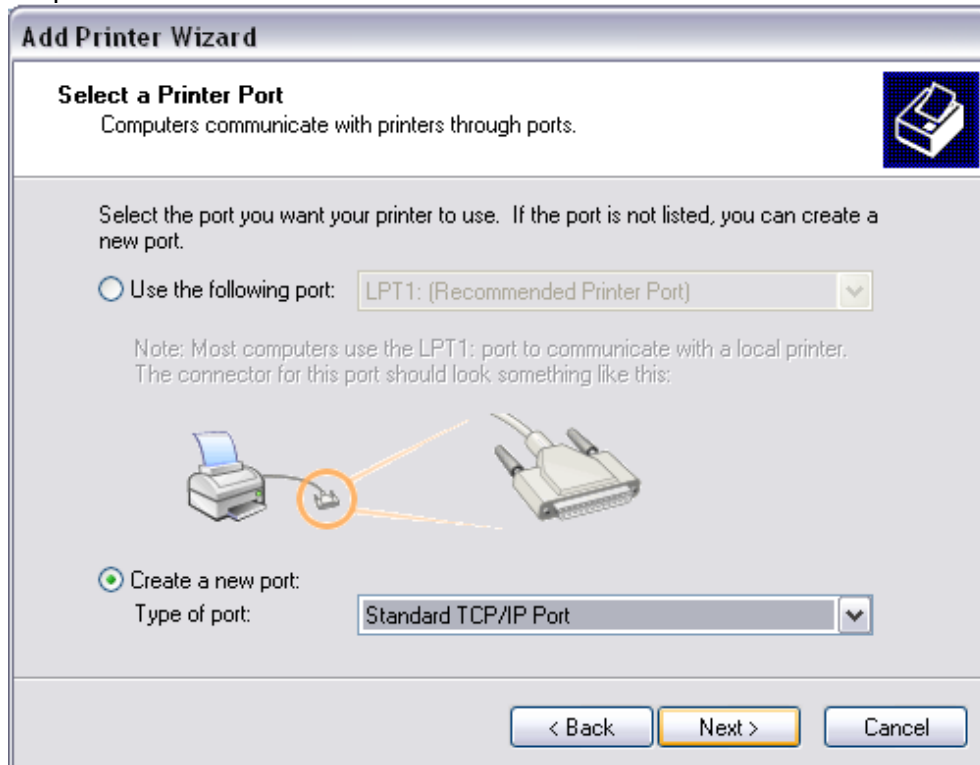
Welcome to the Add Printer Wizard ➤ Press **Next**

Step 4



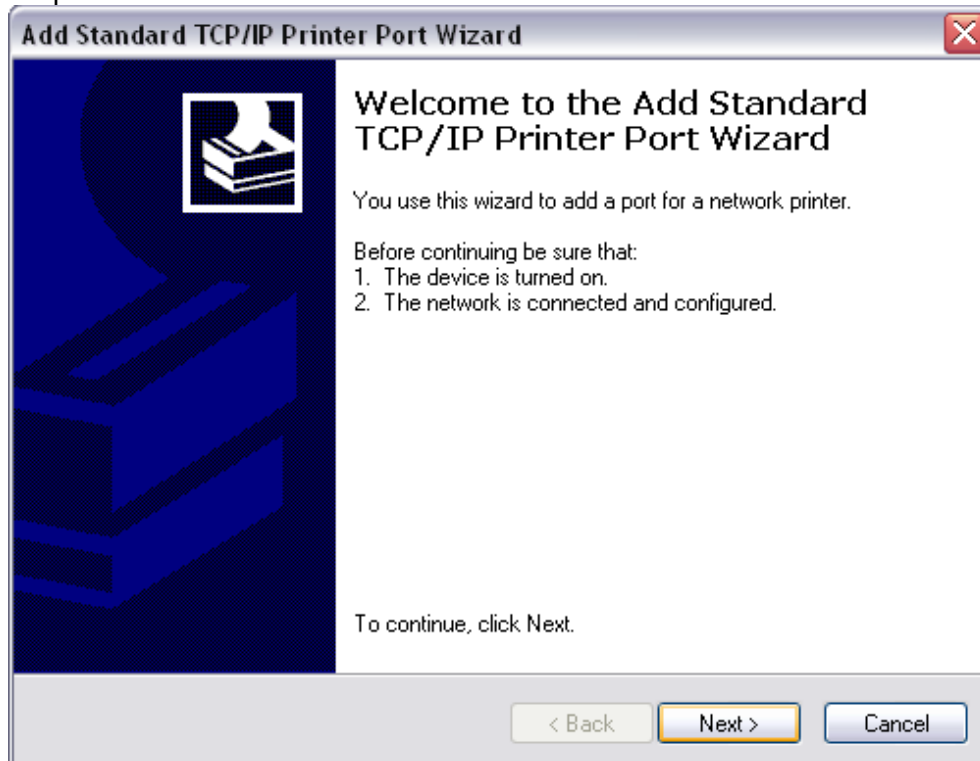
Select **Local printer attached to this computer** ➤ Press **Next**

Step 5



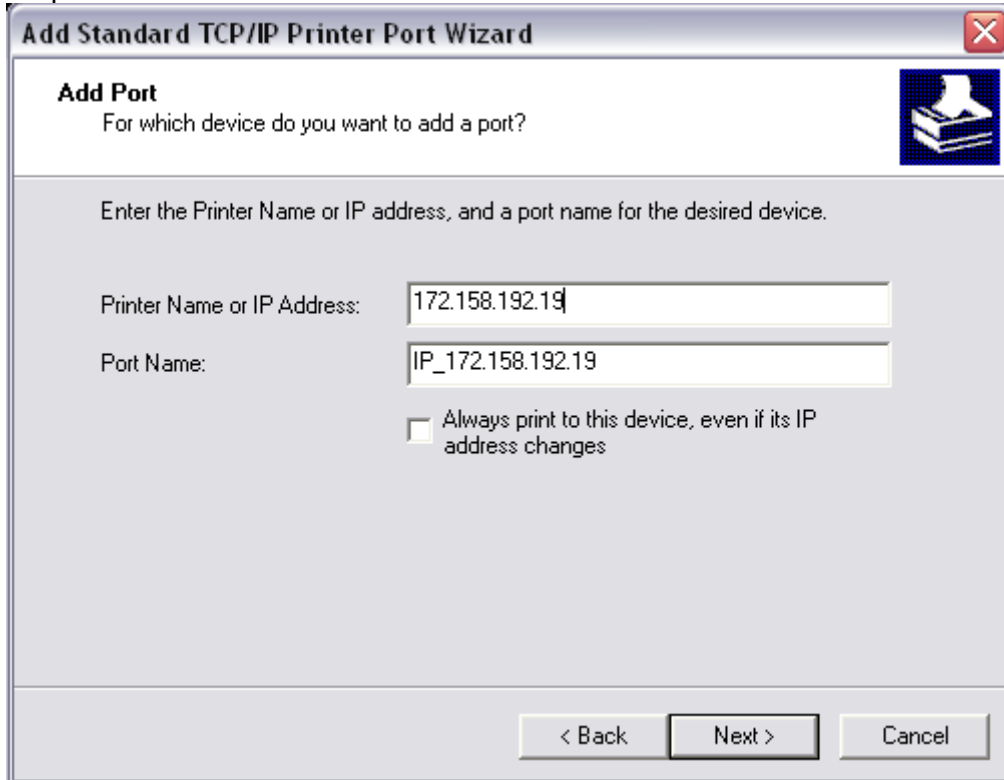
Select **Create a new port: Type of port** ► **Standard TCP/IP Port** ► Press **Next**

Step 6



Welcome to the Add Standard TCP/IP Printer Port Wizard ► Press **Next**

Step 7



Add Standard TCP/IP Printer Port Wizard

Add Port
For which device do you want to add a port?

Enter the Printer Name or IP address, and a port name for the desired device.

Printer Name or IP Address: 172.158.192.19

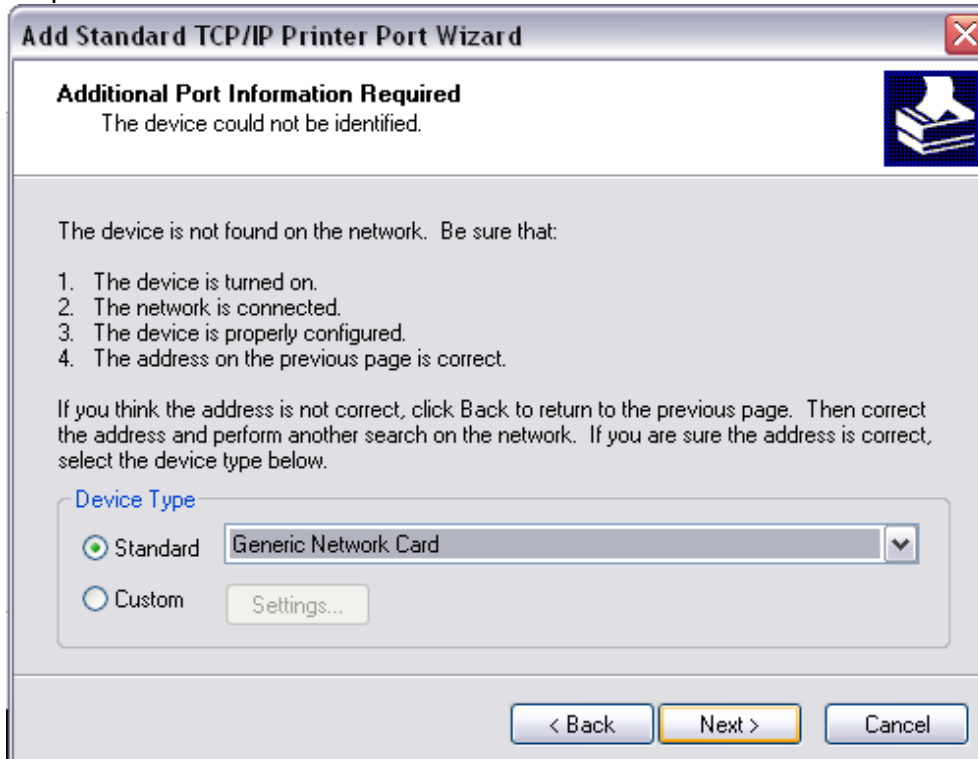
Port Name: IP_172.158.192.19

☐ Always print to this device, even if its IP address changes

< Back Next > Cancel

Enter the printers IP Address into the box ► Press **Next**

Step 8



Add Standard TCP/IP Printer Port Wizard

Additional Port Information Required
The device could not be identified.

The device is not found on the network. Be sure that:

1. The device is turned on.
2. The network is connected.
3. The device is properly configured.
4. The address on the previous page is correct.

If you think the address is not correct, click Back to return to the previous page. Then correct the address and perform another search on the network. If you are sure the address is correct, select the device type below.

Device Type

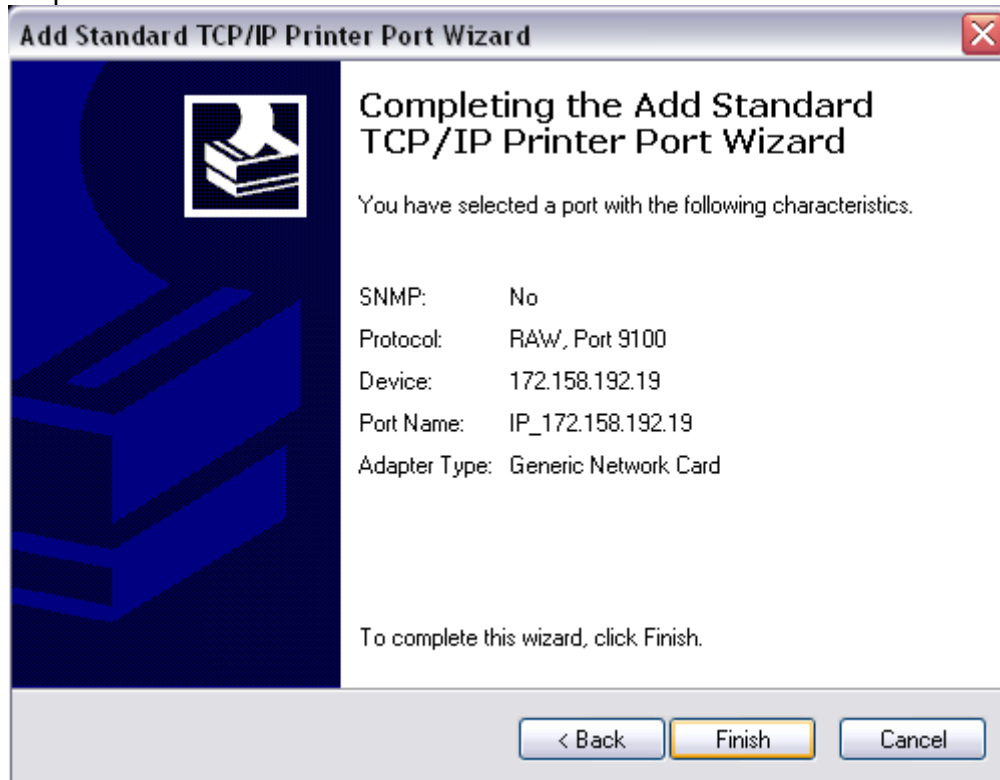
☒ Standard Generic Network Card

☐ Custom Settings...

< Back Next > Cancel

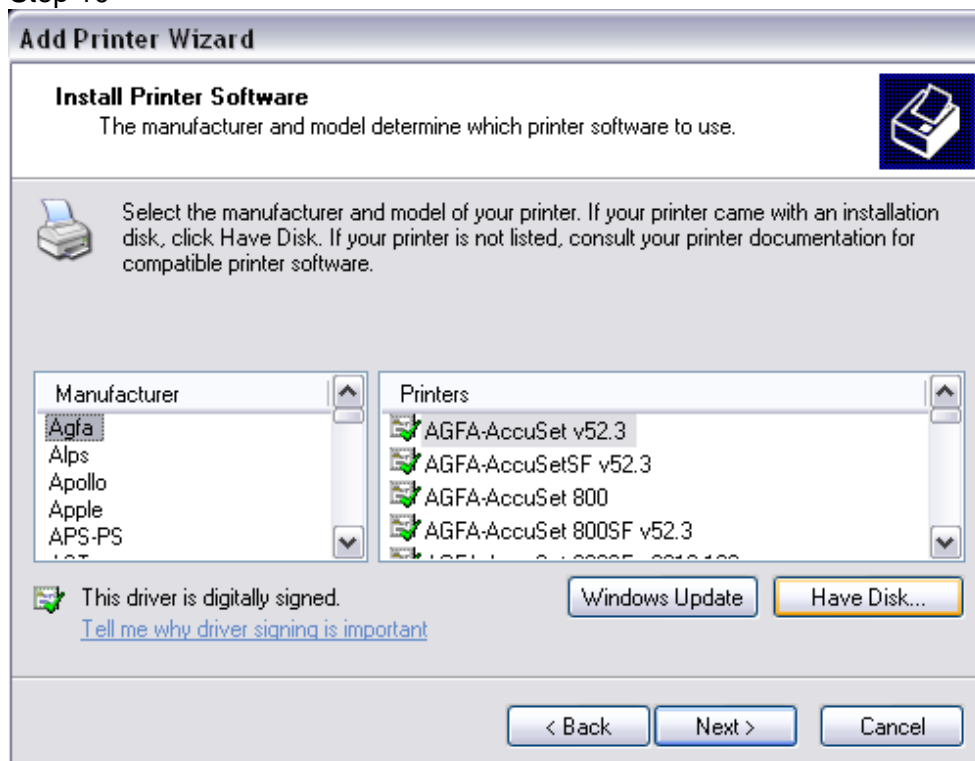
Under **Device Type** ► Select **Standard** ► **Generic Network Card** ► Press **Next**

Step 9



Completing the Add Standard TCP/IP Printer Port Wizard ► Press **Finish**

Step 10



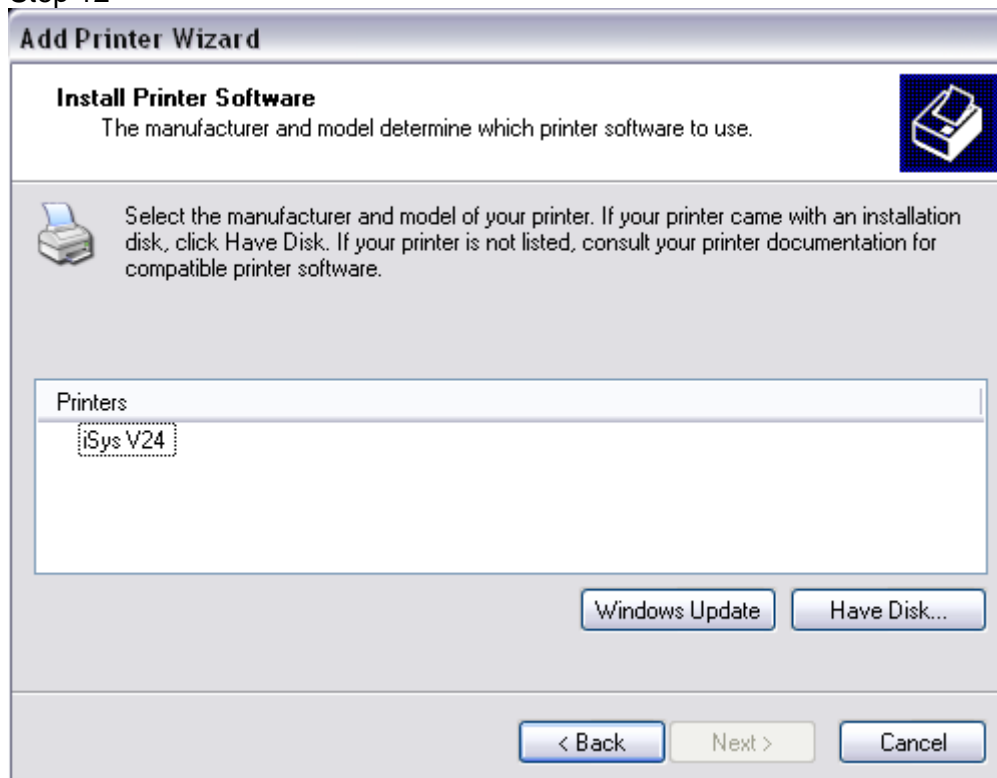
Select **Have Disk**

Step 11



Select **Browse** ► Locate and select the V24 Driver ► Press **Ok** ► Press **Next**

Step 12



Select the **iSys V24** Printer ► Press **Next**

Step 13



Add Printer Wizard

Name Your Printer
You must assign a name to this printer.

Type a name for this printer. Because some programs do not support printer and server name combinations of more than 31 characters, it is best to keep the name as short as possible.

Printer name:

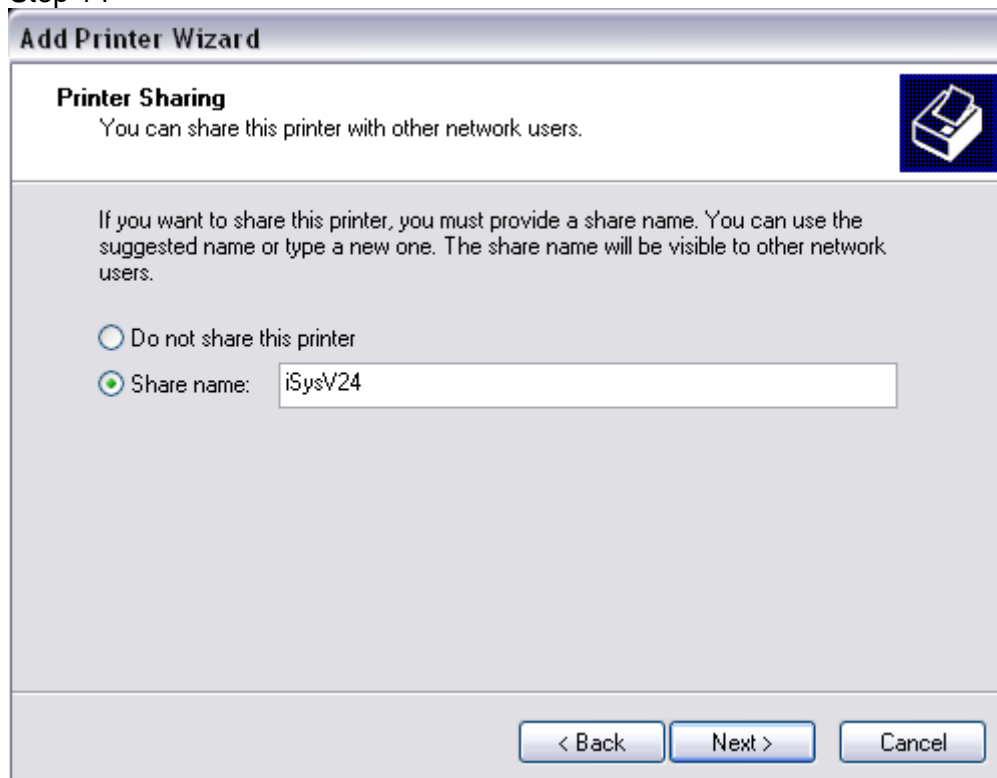
Do you want to use this printer as the default printer?

☐ Yes
☒ No

< Back Next > Cancel

Enter the **printer name** ➤ Select **yes** if you would like the iSys V24 to be your default printer or **no** if you do not ➤ Press **Next**

Step 14



Add Printer Wizard

Printer Sharing
You can share this printer with other network users.

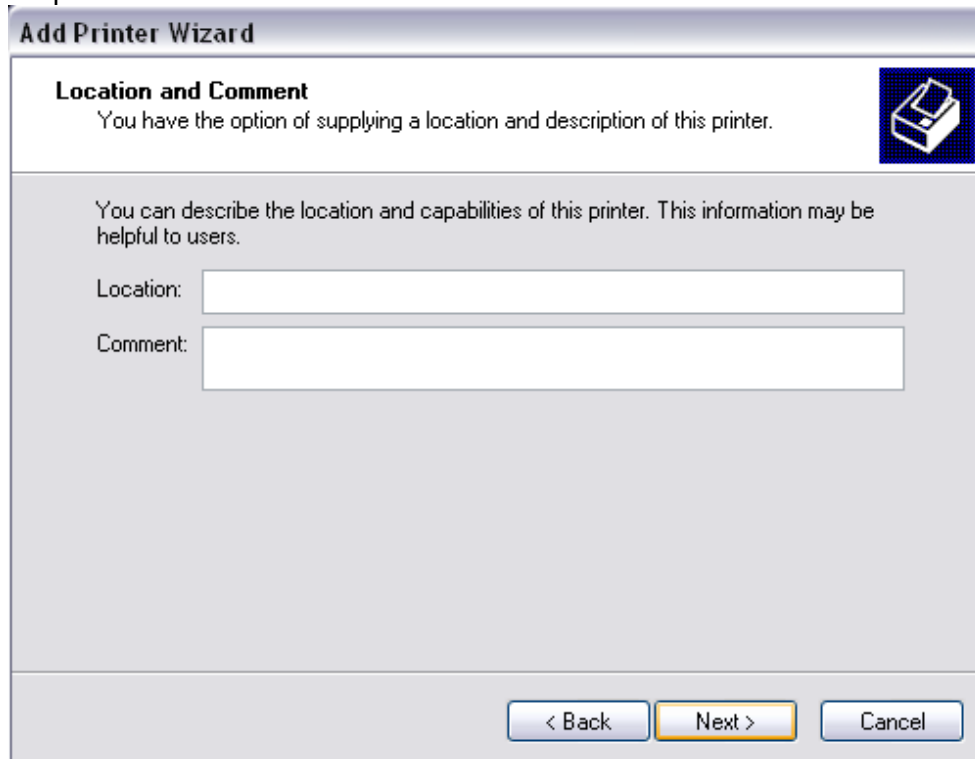
If you want to share this printer, you must provide a share name. You can use the suggested name or type a new one. The share name will be visible to other network users.

☐ Do not share this printer
☒ Share name:

< Back Next > Cancel

Select a sharing option ➤ Press **Next**

Step 15



Add Printer Wizard

Location and Comment
You have the option of supplying a location and description of this printer.

You can describe the location and capabilities of this printer. This information may be helpful to users.

Location:

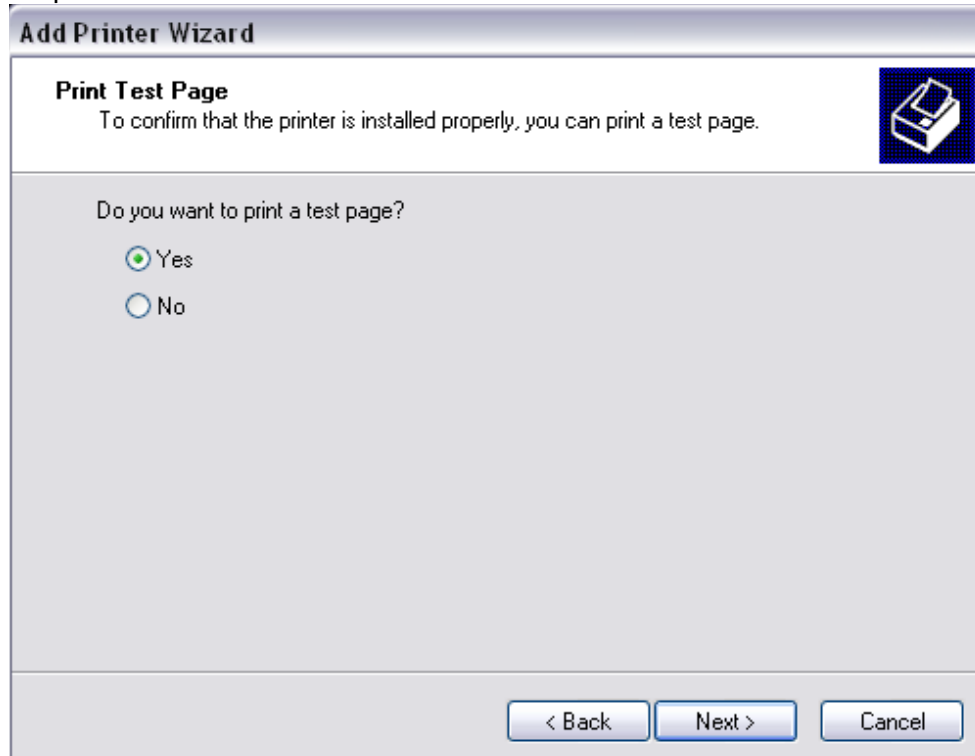
Comment:

< Back Next > Cancel

This screenshot shows the 'Add Printer Wizard' window at the 'Location and Comment' step. The window has a title bar and a header area with the title 'Add Printer Wizard'. Below the header, there's a section titled 'Location and Comment' with a printer icon. The main area contains instructions and two text input fields for 'Location' and 'Comment'. At the bottom, there are three buttons: '< Back', 'Next >', and 'Cancel'.

Enter a location and a comment ► Press **Next**

Step 16



Add Printer Wizard

Print Test Page
To confirm that the printer is installed properly, you can print a test page.

Do you want to print a test page?

☒ Yes

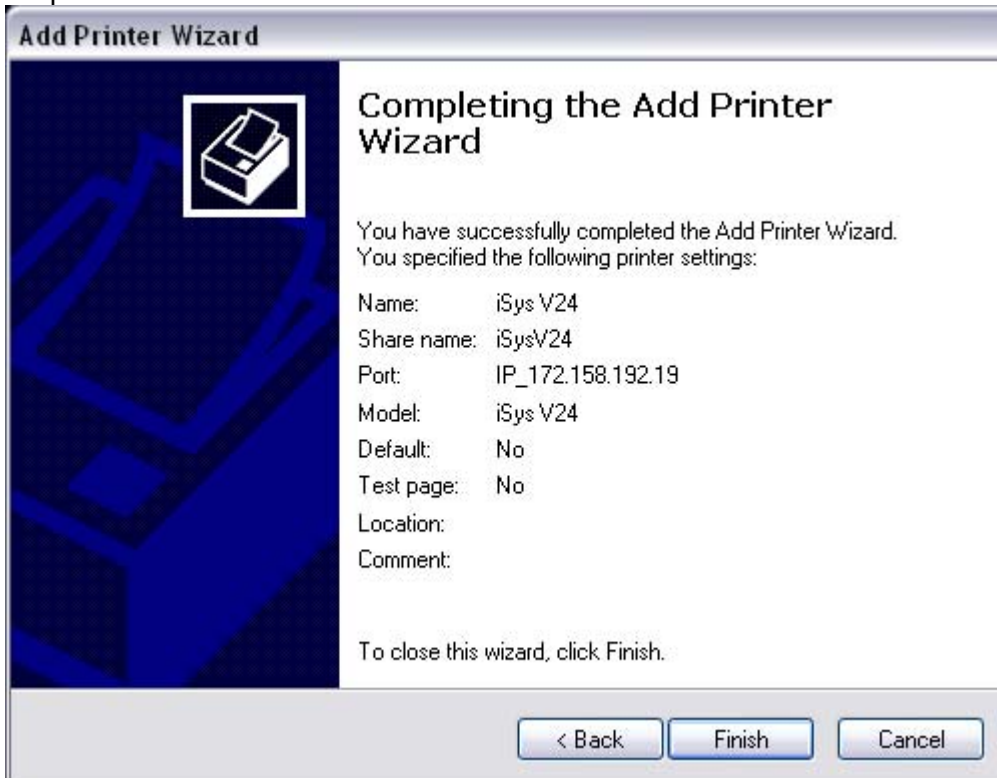
☐ No

< Back Next > Cancel

This screenshot shows the 'Add Printer Wizard' window at the 'Print Test Page' step. The window has a title bar and a header area with the title 'Add Printer Wizard'. Below the header, there's a section titled 'Print Test Page' with a printer icon. The main area contains instructions and a radio button selection for 'Do you want to print a test page?'. At the bottom, there are three buttons: '< Back', 'Next >', and 'Cancel'.

Select **Yes** or **No** to print a test page ► press **Next**

Step 17



Completing the Add Printer Wizard ► press **Finish**

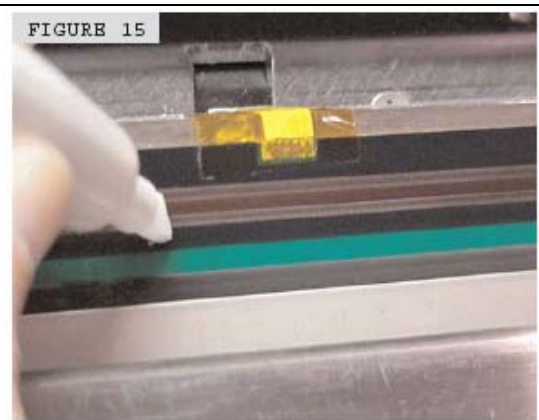
Quickdraw Media Installation

CAUTION: Do not touch the thermal print head. Natural body oils can damage it. Scratches in the print head will affect image quality. Print head damage caused by users is not covered by warranty.

Your plotter comes with a sample roll of media properly installed. To replace or change media, refer to the following procedure:



1. Pull up on both lid latches and lift lid up until lid support is locked (figure 12).
2. Insert spindles in the core ends of the new media roll.
3. Carefully position the new roll in the media housing and seat the spindles in the spindle blocks. Press down firmly to seat the roll in the blocks. Ensure the roll is seated squarely in the blocks (figure 13).



4. The media unwinds from the bottom of the installed roll.
5. The media is threaded as shown in Figure 14. Allow an extra few inches of media through the exit path, past the cutter assembly.
6. Once the media is through the exit path, hold the opposite sides of the media and tug forward to squarely align and remove wrinkles.
7. Clean the print head with the Print Head Cleaning Pen shown in Figure 15.

CAUTION: The thermal print head should only be cleaned with the Print Head Cleaning Pen or with a solution of 99.9% Isopropyl alcohol on a lint free wipe. Water and other solvents can damage the print head. Print head damage caused by users is not covered by warranty.



8. Ensure the lid latches are in the “open” position.

9. Lift up on lid and pull up on lid support to release, slowly lower the lid.

10. Close and seat the lid latches by pressing down on one corner and pushing the latch lever down and in. Repeat this process on the opposite side of the lid assembly (figure 16).

NOTE: If the lid latches are not properly seated, the red error light will display on the Control Panel and “Latches Open” will appear in the LED display.

11. Set Control Panel to “ON LINE” (see Section 8 for information).

NOTE: Ensure the media type shown in the Control Panel Menu corresponds with the actual installed media. (Refer to Section 8 if changes to settings are required).

CAUTION: The imaging characteristics of approved media are matched to the thermal output of the print head. Operating at incorrect media settings or with unapproved media may damage the print head. Print head damage caused by such use is not covered by warranty.

Quickdraw Media for the V24

The iSys QuickDraw line of direct image media is matched to the performance characteristics of our plotters to give you consistent, high quality results at an economical price. Qualified QuickDraw papers are an essential part of the imaging system that helps to assure peak performance and long, trouble-free imager life.

PREMIUM PAPER

A premium, heavyweight paper that has the look and feel of bond paper. The high sensitivity imaging layer and bright white background produce sharp, crisp, fine line detail and dense solids. It features a protective topcoat that resists water, scratching, scuffing and marring. It is ideally suited for plots requiring frequent handling.

REPORT PAPER

This medium-weight, high-sensitivity paper has a bright white background to produce high-contrast output with crisp fine-line detail and dense solid fills. Report paper is an economical choice for your high-volume, general-purpose output needs.

CLEANING PENS

The convenient cleaning pen assures proper print head maintenance, helps enhance print quality and prolongs print head life.

NOTE: For pricing and delivery on qualified QuickDraw media, please contact your iSys sales representative or authorized dealer.

Starting the V24 Plotter

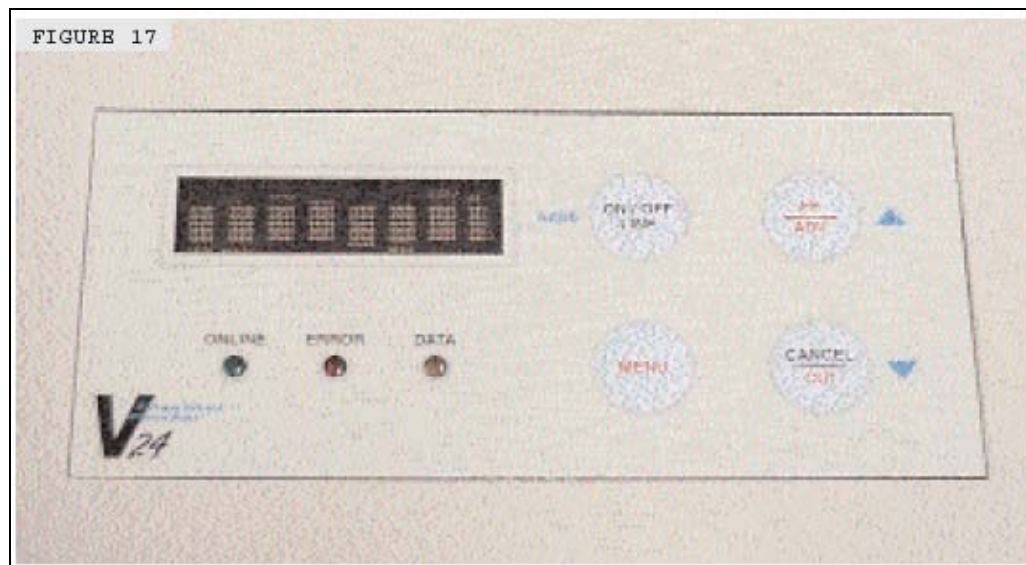
To start the plotter, press the main Power (ON/OFF) Switch shown in Figure 1. The plotter will go through its start up sequence, beginning with the warm-up phase, which brings the unit to its operating temperature.

NOTE: During the warming phase, "Warming" will appear in the LED display, the plotter is not operational until this message is replaced by "Idle".

NOTE: The V24 while plotting, will move the media back and forth when the plotter stops or the data transfer rate from the host is slow.

USING THE CONTROL PANEL

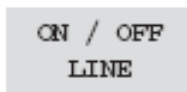
The control panel of the V24 consists of an eight-segment LED display, three indicator lights and four buttons, as illustrated in Figure 17. It allows users to check the plotter operating status and operating settings. It also provides warning/error messages and feedback to the operator. Plotter settings and operating conditions can be changed through the control panel menus.



The indicator lights show status as follows:

1. ON LINE – Green when the plotter is on line and ready.
2. ERROR – Red when an error condition stops the plotter.
3. DATA – Yellow when plotter is receiving data from the host.

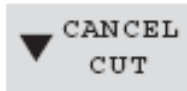
Button functions are identified as follows:



Toggles between ONLINE and OFFLINE modes.



With plotter OFFLINE, pressing this button once will cause the plotter to formfeed up to 250 inches, pressing and holding the button will feed media until button is released.



With plotter ONLINE, and receiving data pressing this button will cancel the current job plotting. When plotter is OFFLINE, pressing this button will cut the media.



When plotter is OFFLINE, pressing this button will scroll through the setup menus. When menu to change is selected, use the UP Arrow (FF/ADV.) button to scroll up, and the DOWN Arrow (CANCEL/CUT) button to scroll down to move through the settings in each submenu. Once the menu changes are complete press ONLINE button to save your changes.

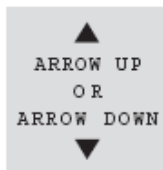
Setting changes can only be performed in the “OFF LINE” mode.

1. Take the plotter OFFLINE by pressing the ON/OFFLINE key. The green ONLINE indicator light will turn off.
2. Find the desired menu item by pressing the MENU button until that menu appears in the LED display. Holding the MENU button will scroll through the menu items faster and will not display the item setting until button is released.
3. Use the UP / DOWN Arrows to change the displayed setting.
4. To save the changes, put the plotter back ONLINE by pressing the ON/OFFLINE button. The green ONLINE indicator light will turn on and the display will read “Idle”.

MENU SELECTIONS



Accesses user modes and function menus. Scrolling is from first to last only.



Moves the arrow up or down to the item you wish to change. When an item is selected, pressing up/down arrow button changes the selection.

Holding down the up or down arrow key while a menu item is selected will scroll through the item options until a menu limit has been reached or the arrow key released.

To run a test plot:

1. Press ON/OFFLINE.
2. Press MENU until you reach the “Test Plt” screen.
3. Press either UP or DOWN arrow to select “Yes”.
4. Press MENU to generate the test plot.

NOTE: The checker board plot will begin after about 4 seconds. After the plot is complete the setting will go back to “No”.

FUNCTIONS AND SETTINGS

Control panel settings are saved as presets for either USER M1 or USER M2. Presets are initially set to defaults for all menu functions. Changes to function settings are stored upon pressing MENU or ONLINE. Setting changes are retained even while the main power is off.

USER MODE

Selects between two user-defined settings. Default "User 1". To access functions in either user mode:

- Select ON/OFFLINE
- Press MENU button once "User Mode" is displayed
- Then "User 1" will be displayed
- Press UP Arrow to change setting

SPEED

Adjust the speed of the plot output. The default is ST. Change the speed by selecting the speed option in the appropriate menu. Move up or down the scale by pressing the up and down arrows. Speed is in inches per second (ips).

Speeds: 2 (ips)
 1-1/2 (ips)
 1 (ips)
 1/2 (ips)
 ST(single trace mode)

NOTE: If the plot speed is erratic, or if output quality is unacceptable, lower the plot speed. Such problems may arise when data enters the plotter at a slower rate than the plotter is set for. This is most likely to occur at 2"/sec. setting. Lowering the speed enables the plotter to match the input rate of data and produces a smoother, better quality output.

CONTRAST

Change the contrast by selecting the "Contrast" option in the appropriate menu. Move up or down the scale by pressing the up and down arrows.

Default "0".
Range: +4.... 0.... -4

NOTE: If the plot is light, be sure the correct media type is selected. Increase the contrast level by one and test, repeat if needed.

PLOT TYPE

Change the plot type by selecting the "Plot Type" option in the appropriate menu. Move up or down the scale by pressing the up and down arrows.

Default "Normal".
Types: Normal.... Mirror

NOTE: Setting to mirror the plotter will mirror image the data received.

MEDIA

Selects supported media types. The default setting is non top coat, displayed as "Non T.C.". Note that if you use other media, you must change the media setting. If unsure of the media specifications, start at the Non T.C. setting and then increase the setting to Top Coat if necessary.

Types: Non T.C. and Top Coat

NOTE: Change the media setting by pressing the up or down arrows in the MEDIA submenu. Select NO T.C. P (light paper), TC PAPER (heavy paper).

CAUTION: Thermal plotting technology involves high temperatures. Incorrect media settings can damage the print head or other components, damage the media and void the warranty.

BPS

Change the number of bytes per scan (image width) by selecting the “BPS” option in the appropriate menu. Move up or down the scale by pressing the up and down arrows.

Default “1184”.

Range: 1184594 (400 dpi resolution)

59264 (200 dpi resolution)

NOTE: The selected bytes per scan on the plotter must match the bytes per scan in the application software that is running on the attached computer host. If the two settings don't match the data will look scrambled.

VERT DPI

To change the vertical resolution (dots per inch) select the “Vert DPI” option in the appropriate menu. Move up or down the scale by pressing the up and down arrows.

Default “200/400”.

Emulations: 200/400 and 203/406 DPI

NOTE: Image must be rastered to the correct resolution or the image scaling will not be correct.

SCALING

Use scaling to compensate plot length measurement for tolerances in media thickness, roller diameter and head pressure. Use scaling to compensate for plot length differences, which are caused by variances in media thickness. Scaling can stretch or shrink a plot up to one inch.

Default setting is “0”.

Range: +40.... 0.... -40

NOTE: Change the scaling setting by pressing the up or down buttons in the “Scaling” submenu. The UP arrow button accesses the positive (stretch) increments of 1/40 inch.

TEST PLT

Generates a test plot. Five inches of plot are produced in a checkerboard pattern so you can see if the plotter is creating a plot image and feeding the paper correctly, and if contrast levels and media settings are acceptable.

To change from the default TEST PLOT setting of “No”, press the UP arrow button in the “Test Plt” submenu to display “Yes”, then press the MENU button to enable the test.

NOTE: Plot creation takes about 4 seconds before plotting. Once plot is complete the display will go back to “No”.

FF LEN.

Adjust the length of media moved (in inches) if a manual form-feed, remote form-feed, or an end of transmission (EOT) is detected. The maximum adjustment is 250 in.

Default “5”.

TOF ADJ.

Adjust the distance from the perforation to the “I” mark. This setting is used for perforated roll or fanfold papers only. This adjustment allows the user to select where the image will start plotting from the perforation.

Default “0”.

Range: 0.....999

NOTE: Adjustments are in 1/16 of an inch increments.

HYST.

Used to adjust image quality at higher speeds. This setting looks at the history of each dot and decides, through an algorithm, the amount of energy needed.

Default "Off".
Range: Off, 1.....5 (darkest)
NOTE: This setting can make the fill patterns look lighter or darker.

EOT CUT

Automatically cuts the media when an EOT command is received from the host. This setting will advance the media past the cutter then cut the media off.

Default "No".

Setting: Yes or No

PRE-BUFF

Helps hosts with slower data transfer rates to plot using a faster speed without the stop and start gaps. This setting uses the onboard memory to buffer the incoming data before plotting the image.

Default "Off".

Setting: On or Off

NOTE: Memory can be expanded up to 32 Meg.

NIB SAVE

Helps nib life on vertical boarders that are always turned on.

Default "Auto".

Settings: Auto (automatically shifts plot left and right)

Lock@1 (will lock image at that position)

Lock@2

Lock@3

Lock@4

Lock@5

Center (will center the image)

NOTE: Auto setting is recommended to help improve nib life. If the print head is missing a nib the plot can be shifted and locked in place using the Lock@ setting.

BEEPER

Controls the audible signal for error messages such as media out warning. This sound can be changed.

Default "Off".

Settings: Off (turn beeper off on errors)

Solid (beeper on continuous until error cleared)

Fast P (beeper will pulse at a fast rate)

1 Min P (beeper will pulse every minute)

3 Sec P (beeper will pulse every 3 seconds)

5 Times (beeper will pulse 5 times then turn off)

NOTE: Error condition must be cleared in order to continue plotting.

OFFL ERR

When set to "Yes", with an error condition the plotter interface will go offline to the host.

Default "Yes".

Settings: Yes or No

BUSY OFFL

When set to "Yes", the plotter interface will assert the busy line to the host when the plotter goes offline.

Default "No".

Settings: Yes or No

Warranty, Maintenance and Service

WARRANTY

The iSys written warranty is included with your shipment. Please take the time to read the warranty so you fully understand your coverage under its provisions.

MAINTENANCE

The V24 requires little routine or preventative maintenance. Recommended maintenance will enhance performance, extend useful life and can be performed quickly and easily at the installed location.

Use 99.9% isopropyl alcohol to clean the print head.

Check that support shock on the lid assembly is functioning correctly.

SERVICE CALL

Phone: (403) 204-5212

Toll Free: 1-866-415-ISYS (4797)

Fax: (403) 204-1971

Email: support@isys-group.com