



## In the Box



**1.** Plug in Power Supply  
back of printer



**2.** Turn Printer ON



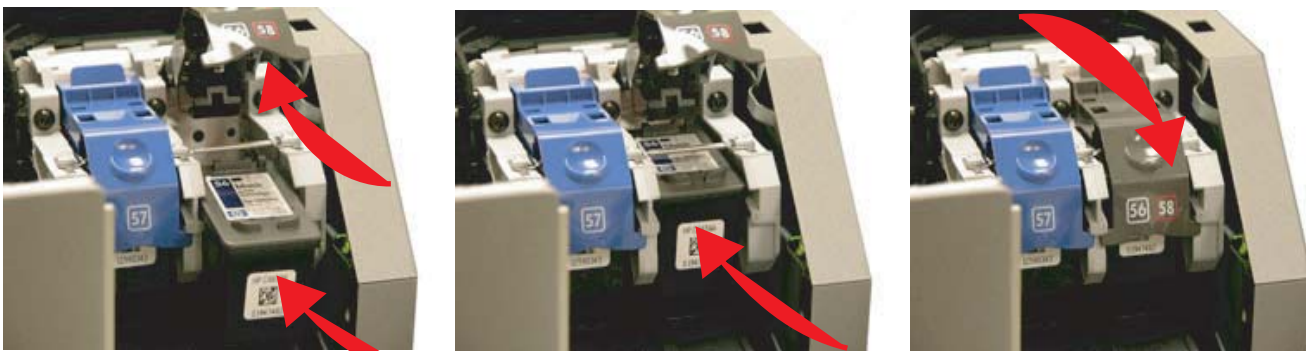
\* press black clips inward

**3.** Open Unit

\* panel will  
drop down



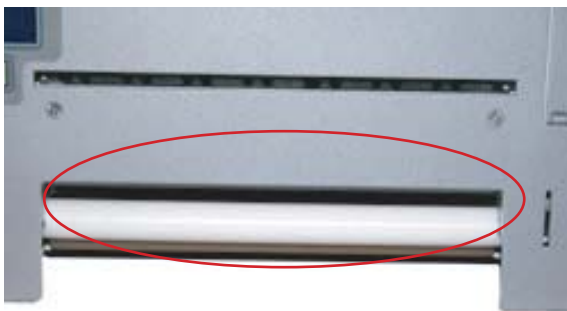
**4.** Load Inks  
Remove Pink Tape



**5.** For each cartridge: raise cradle latch, insert print cartridge, then close cradle latch.



**6.** Close Unit



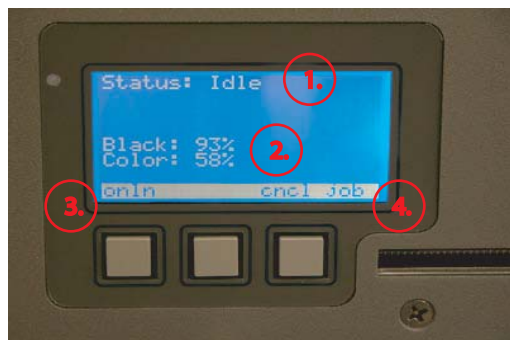
**7.** Load Paper above feeder bar; slowly feed paper into printer until it stops.



**8.** Connect Printer to Computer

Continued over...

# Tutorial



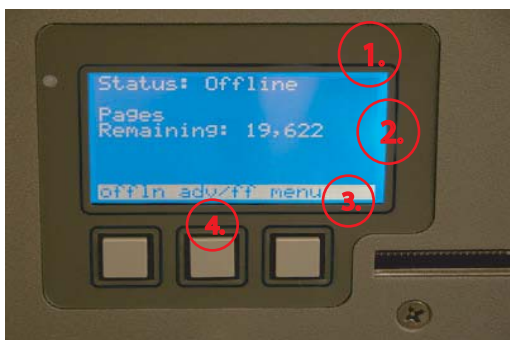
LCD display

Power On (Step 2 Quick Start) Printer will be "Busy" while printer starts-up.

LCD will display:

- (1) Status "Idle". In this mode you are able to print.
- (2) Black and Colour ink status.
- (3) Online/Offline button
- (4) cncl Job (Cancel Job)

Press the "onln" (3) button to switch the printer to "offln"



LCD display

LCD will display:

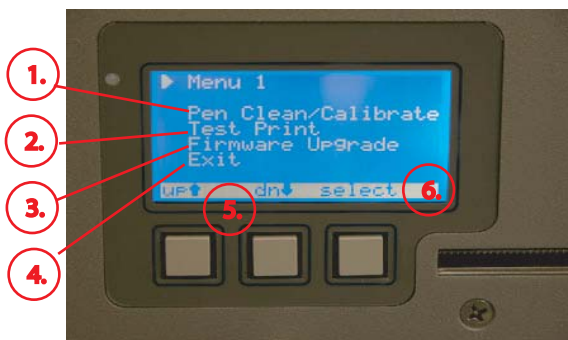
- (1) Status "Offline"
- (2) "Pages Remaining" - this is the \*QAN License  
For the beta program QAN has been preloaded for 20,000 sheets (8.5x11)  
The printer will stop printing at zero sheets. Printer will need to be returned to iSys to reload QAN License. (Contact your Sales Rep)
- (3) click on the "Menu" button for printer options
- (4) adv/ff button; use to move paper through the printer

\*iSys, as part of the media imaging qualification program, has established the Quality Assurance Number (QAN) License program. The QAN License program allows you to optimize the performance of your iTerra Lite.

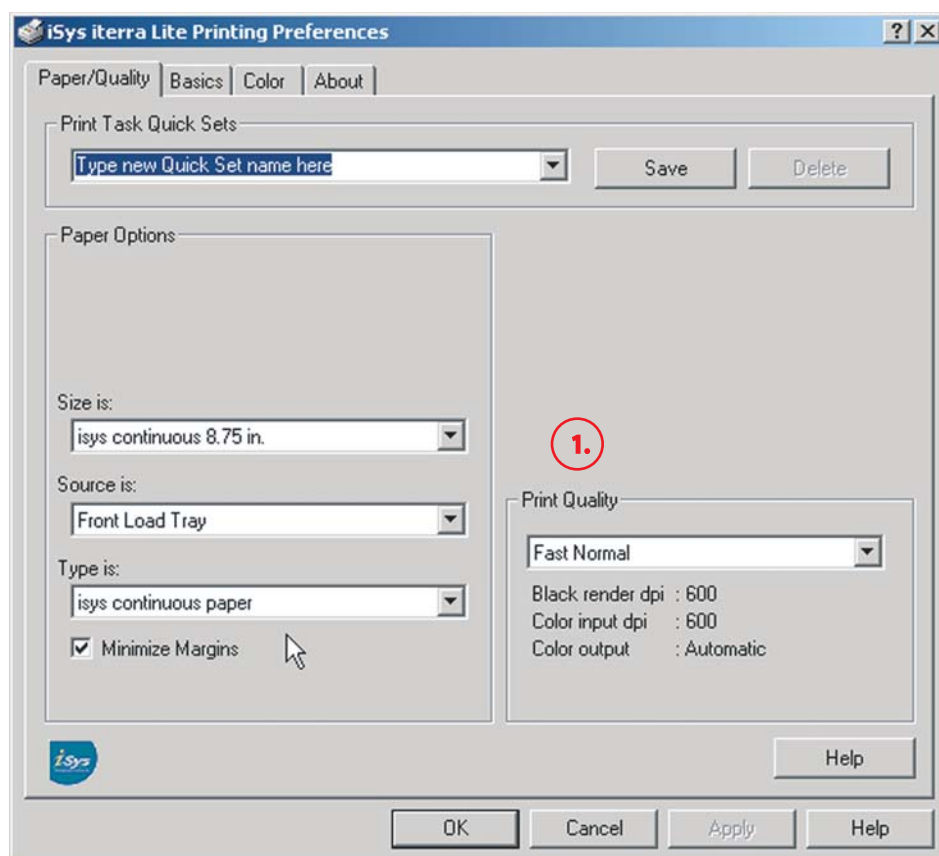
Menu Window:

- (1) Pen Clean/Calibrate. Use when inserting new Pen Inks.
- (2) Test Print
- (3) Firmware - Use when new firmware is released.
- (4) Exit

Use the "up" or "down" (5) buttons to scroll through the menu. Click "Select" (6) button for your selection. Exit the Menu Window



LCD display



Install Driver:

Installation:

Place installation cd in cdrom drive. Within windows operating system select 'Start=>Settings=>Printers'. Within Printers window, perform add printer function. Select 'local printer' then go to next screen, select 'lpt1:' as print port and go to next. Select 'have disk', browse the CD until your in the 'iTerra Lite Drivers' directory, the .inf file should be highlighted and select open. Press OK on next screen and Printer driver will begin install. Printer model type should display iSys iTerra Lite, press next. Move through the next series of screens accepting the default values. Do not attempt to print the test page at this point.

Set-up (1)

Default printing preferences are set to perform continuous paper printing. Do not attempt to use 'Best' or 'Maximum dpi' print quality settings in continuous mode as there will be page gaps on your print output. Before a test page print can be performed, the user must go into printer properties window and then select OK. Test print page can now be performed successfully.